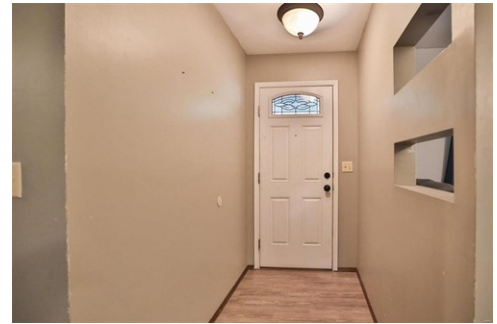




\$ 210,000



Matterport



310 Wolf Ave, Hamel, IL 62046

- » Beds: 3 | Baths: 2 Full, 1 Half
- » MLS #: 24050712
- » Single Family | 1,644 ft² | Lot: 12,197 ft²
- » More Info: 310WolfAve.IsForSale.com



Julie Purnell
 (618) 972-9052
 jpurnell@gori Realtors.com
 www.homesbyjuliepurnell.com



Gori Realtors, LLC
 212 St. Louis St
 Edwardsville, IL 62025
 (618) 659-5565

This is a 3-bedroom, 3-bathroom home located in the Edwardsville school district in Hamel. It offers convenient access to the interstate. The main floor features a spacious eat-in kitchen with a covered porch that leads to a shaded backyard. The living room includes a wood-burning fireplace, and down the hall, you'll find a guest bathroom, 2 bedrooms, and the primary bedroom with a 3/4 bathroom. Additionally, there is a full partially finished basement with a half bathroom, a family room, and a large storage area. Home being sold as is.

